



# **Moodle 4.0 course creation**

Moodle Moot It 2021

02 12 2019



- 
- Course navigation
  - Activity cards design
  - Collapsible sections
  - Course index
  - Blocks drawer
  - Drag&Drop
  - Add sections
  - Move modal
  - Completion icons
  - Accessibility

***Demo time!***

**Because nothing can go wrong with an  
old-fashioned live demo**

## PART 2

## MIGRATION PROCESS

- Courseformat subsystem
- Output classes
- Format renderer
- Base class

***Demo time!***

**What happens when you use a Moodle  
3.x course format in Moodle 4.0**

# core\_courseformat subsystem

---

- The course/format folder is now a subsystem containing:
  - course formattings and rendering methods
  - course tests
  - course format API

# Course format output classes

---

- Added **3 main renderer methods** (for full course, section and activity)
- The format **renderer class is now mandatory**
- 17 new output classes + mustache templates
- 33 deprecated methods from course\_renderer and section\_renderer (aka. `format_section_renderer_base` in Moodle 3.11)
- 13 new methods in `core_courseformat\base` class (aka. `format_base` in Moodle 3.11)

format\_xxx\course\_format extends core\_coureformat\base

Method page\_title is now part of course\_format class

format\_xxx\output\renderer.php extends core\_courseformat\output\section\_renderer (which extends course\_renderer)

### OVERRIDABLE RENDERER METHODS

render\_content

To use a different main template for the course rendering

course\_section\_updated

Method used by ajax calls like "create section" to get the new section HTML

course\_section\_updated\_cm\_item

Method used by ajax calls like "duplicate activity" to get the new activity HTML

### OVERRIDABLE TEMPLATABLES (OVERRIDABLE)

core\_courseformat\output\local\content (\$format)

...\content\addsection

...\content\sectionnavigation

...\content\sectionselector

...\content\section (\$format, \$section)

...\content\section\availability

...\content\section\header

...\content\section\cmsummary

...\content\section\controlmenu

...\content\section\summary

...\content\section\cmitem

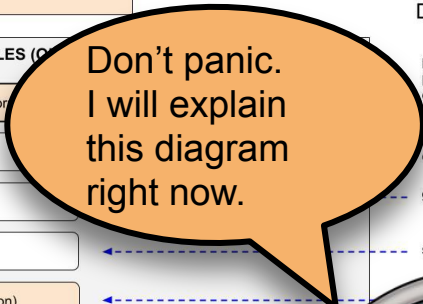
...\content\cm (\$format, \$section, \$cm)

...\content\cm\controlmenu

...\content\cm\availability

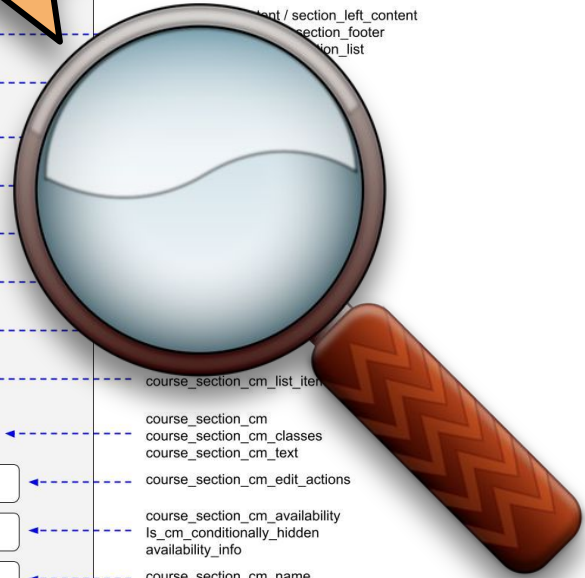
...\content\cm\cmname

...\content\cm\title



### Deprecated render methods (33)

- print\_single\_section\_page
- print\_multiple\_section\_page
- course\_activity\_clipboard
- page\_title
- change\_number\_sections
- get\_nav\_links
- section\_nav\_selection
- content / section\_left\_content
- section\_footer
- section\_list
- course\_section\_cm\_list\_item
- course\_section\_cm
- course\_section\_cm\_classes
- course\_section\_cm\_text
- course\_section\_cm\_edit\_actions
- course\_section\_cm\_availability
- is\_cm\_conditionally\_hidden
- availability\_info
- course\_section\_cm\_name
- core\_course\output\course\_module\_name
- course\_section\_cm\_name\_title



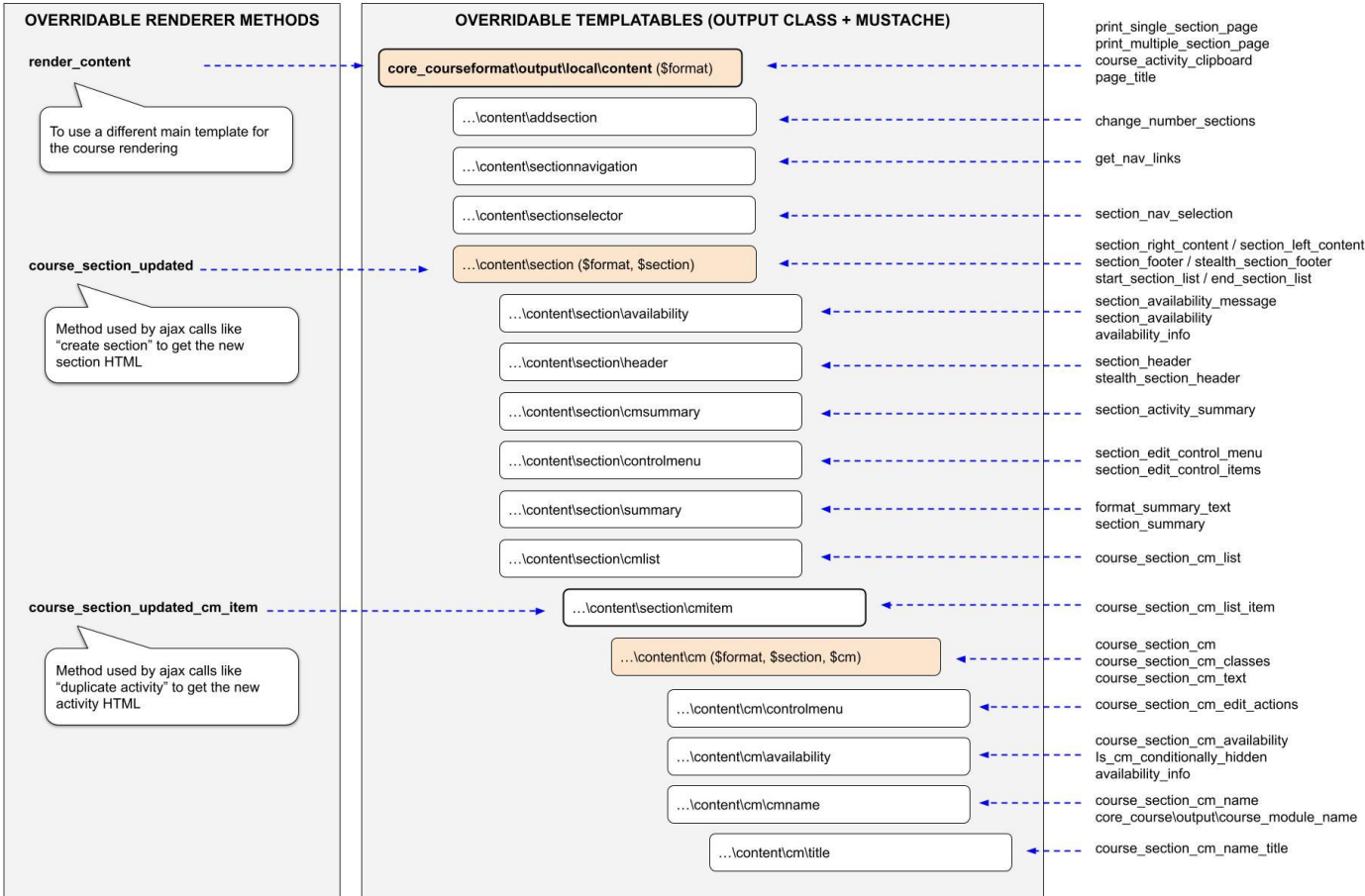


format\_xxx\course\_format extends core\_coureformat\base

Method page\_title is now part of course\_format class

format\_xxx\output\renderer.php extends core\_courseformat\output\section\_renderer (which extends course\_renderer)

### Deprecated render methods (33)



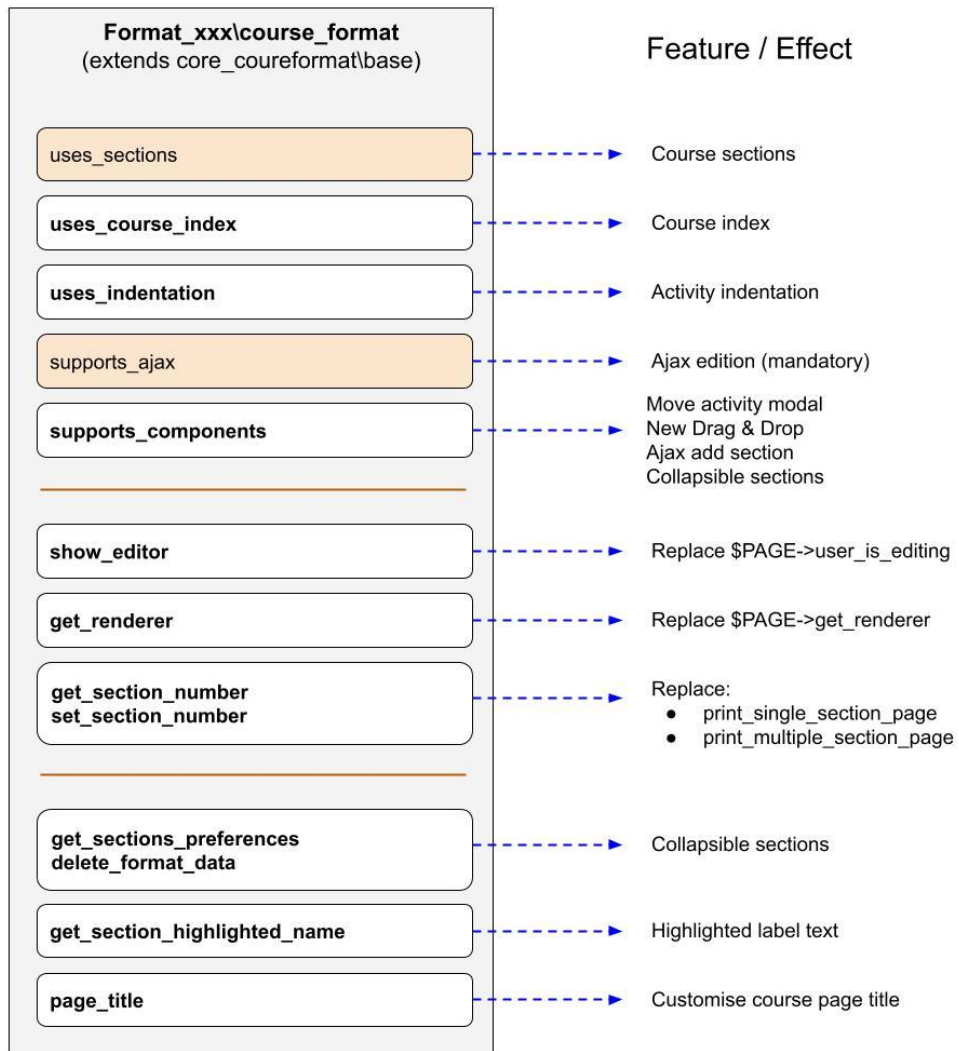
# 4.0 new features

---

Course index	Opt-in
Indentation (disabled in the standard formats)	Opt-out
New drag&drop	Opt-in
Move section/activity modal	Opt-in
Collapsible sections	Opt-out (overridable)
Activity card display	Opt-out (overridable)

# 4.0 Format base class methods

---



**PART 3**

**COURSE EDITOR ARCHITECTURE**

imgflip.com

- 
- Reactive state
  - State actions
  - Components
  - Mutations

***Demo time!***

**“Pay no attention to that man behind  
the curtain”**

**- L. Frank Baum (The Wizard of Oz)**

# Reactive state principles

---

1. Each reactive element is controlled by its own **component** class
2. The UI is and **updated representation of a state data**
3. All user interactions can alter the state data **but never the HTML**
4. The new services are designed to alter the current state data, not the interface.

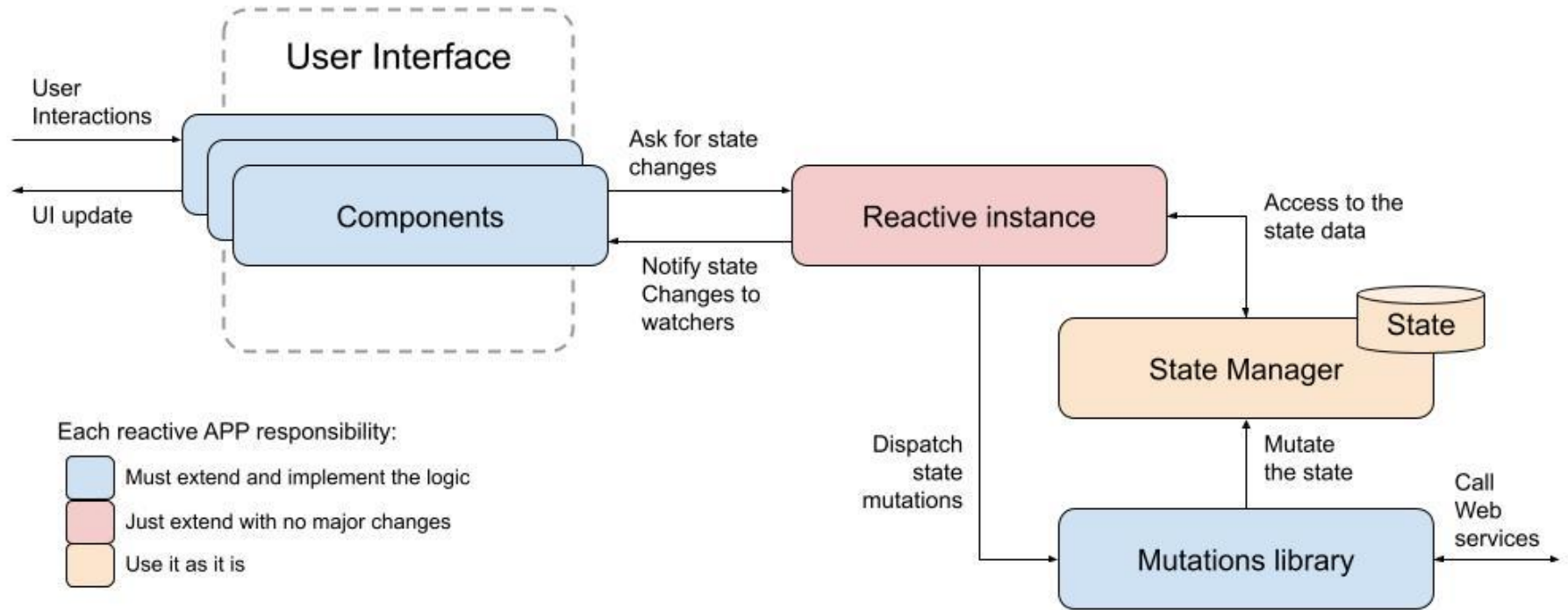
# Module: core/reactive

---

Provides several classes to create small reactive states in Moodle.

- **Reactive:** each reactive application is represented by an instance of this class.
- **BaseComponent:** all reactive components extends this class
- **DragDrop:** a class to convert components into draggable and/or dropzones.
- **M.cfg.reactive:** object to debug your reactive application from the javascript console

# Reactive workflow





**Thanks for  
your attention!**



